



millenium

**Practical, versatile** and **modern.**

logiflex

Combine **functionality**,  
**accessibility** and **timelessness**  
in the same space.





**Contemporary desks for functional and affordable workspaces.**



MILLENIUM-C019D



MILLENIUM-C021



ELEVATION-PLUS-MILLENIUM-C001

## VERSATILITY AT YOUR FINGERTIPS

Perfect for all areas of your workspace, the Millenium collection meets the requirements of any work environment.

Combine your Millenium storage with an Elevation Plus desk for an ergonomic and elegant layout.



**Functional** and  
**contemporary** spaces.



**The storage options available in the Millenium furniture collection meet everyone's personal needs.**

### **WORKSPACES THAT FIT YOUR NEEDS**

Whether bookcases, hutches or drawers, Millenium furniture allows you to combine different storage options for a clear and well-organized workspace.

When private office  
meets **collaboration.**





**Effortlessly transition from your private workspace to a creative collaboration area, within the same layout!**

The Millenium collection furniture complements various Logiflex collections. Have you recognized our Volt furniture with metal handles?



Take **customization** to  
the **next level** for your **spaces**.



**With Millenium,  
there's no need  
to adapt to  
furniture; let the  
furniture adapt  
to you.**

**Square legs?  
Certainly.**

**Angled legs?  
No problem!**



MILLENIUM-C013E



MILLENIUM-C016

## HAVE FUN WITH COLORS, TEXTURES, AND SHAPES

Show your personality through your layout with Leo modular benches: light and easy to move.





MILLENIUM-C025

**Go beyond your  
traditional office.**

### **THINK OUTSIDE THE BOX**

Explore the possibilities that Millenium offers, redefining the way you use our furniture. Pair different storage options to furnish the perfect space! create an environment where work, strategy and storage can meet.

Create an environment where work, strategy and storage can meet.



A timeless classic.

# ILLUSTRATED FINISHES IN THE BROCHURE

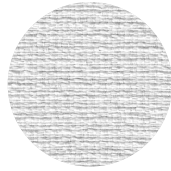
## FABRICS



Stock Fabrics  
Crosslink, Alabaster



Stock Fabrics  
Cloud Nine, Poplar



Stock Fabrics  
Cloud Nine, Angora



Stock Fabrics  
Cloud Nine, Aubergine

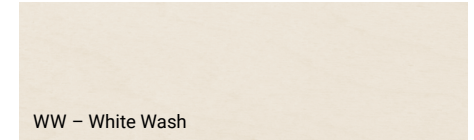


Stock Fabrics  
Hathaway, Smoky



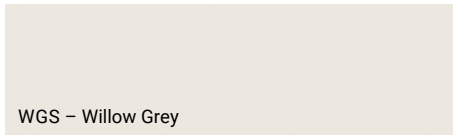
Stock Fabrics  
Hathaway, Fog

## WOOD



WW – White Wash

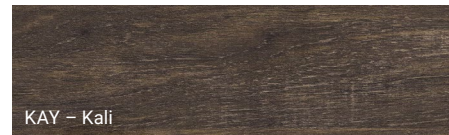
## LAMINATES



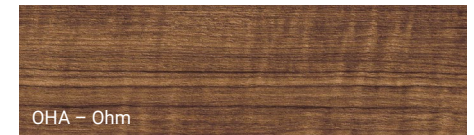
WGS – Willow Grey



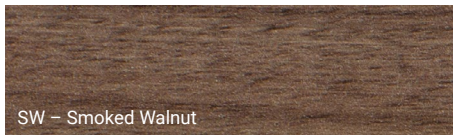
DOO – Doshia



KAY – Kali



OHA – Ohm



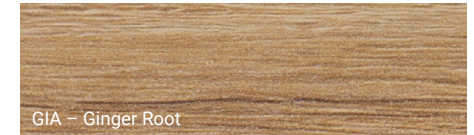
SW – Smoked Walnut



IGS – Ingot Grey

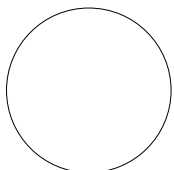


C – Slate



GIA – Ginger Root

## METALS



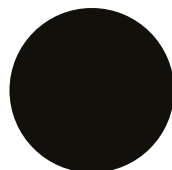
WH  
White



CHR  
Chrome



SN  
Satin Nickel

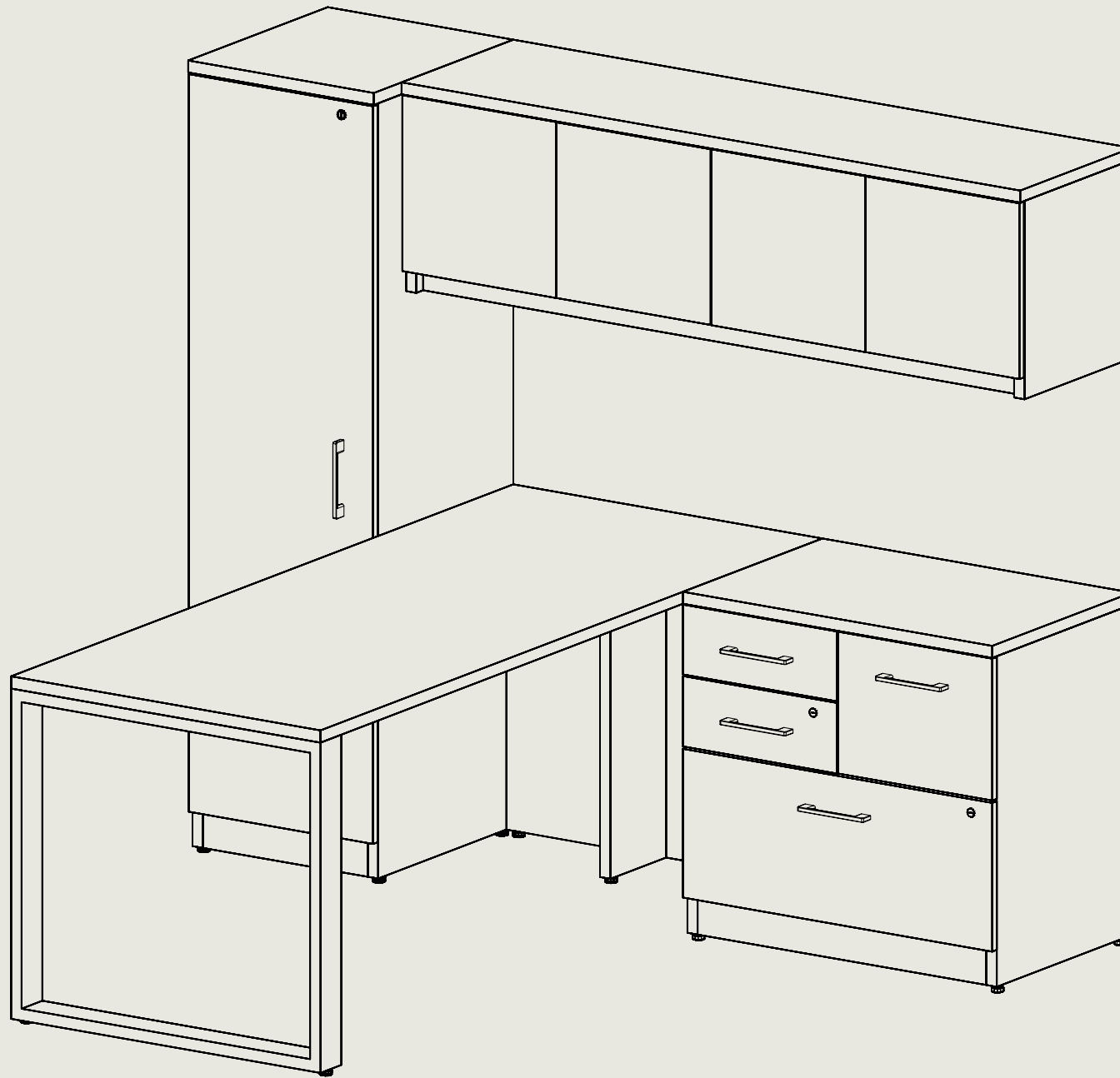


BL  
Black

## COLORS AND FINISHES GUIDE

A wide selection of additional finishes is available in our Colors and finishes Guide.

[View online!](#)



logiflex

1235 St-Roch N., Sherbrooke QC J1N 0H2 Canada  
T : 1.877.864.9323 | F : 1.800.474.7830 | logiflex.ca

As our product line is constantly evolving and expanding,  
we recommend that you visit [logiflex.ca](http://logiflex.ca) for updates.

October 2024